

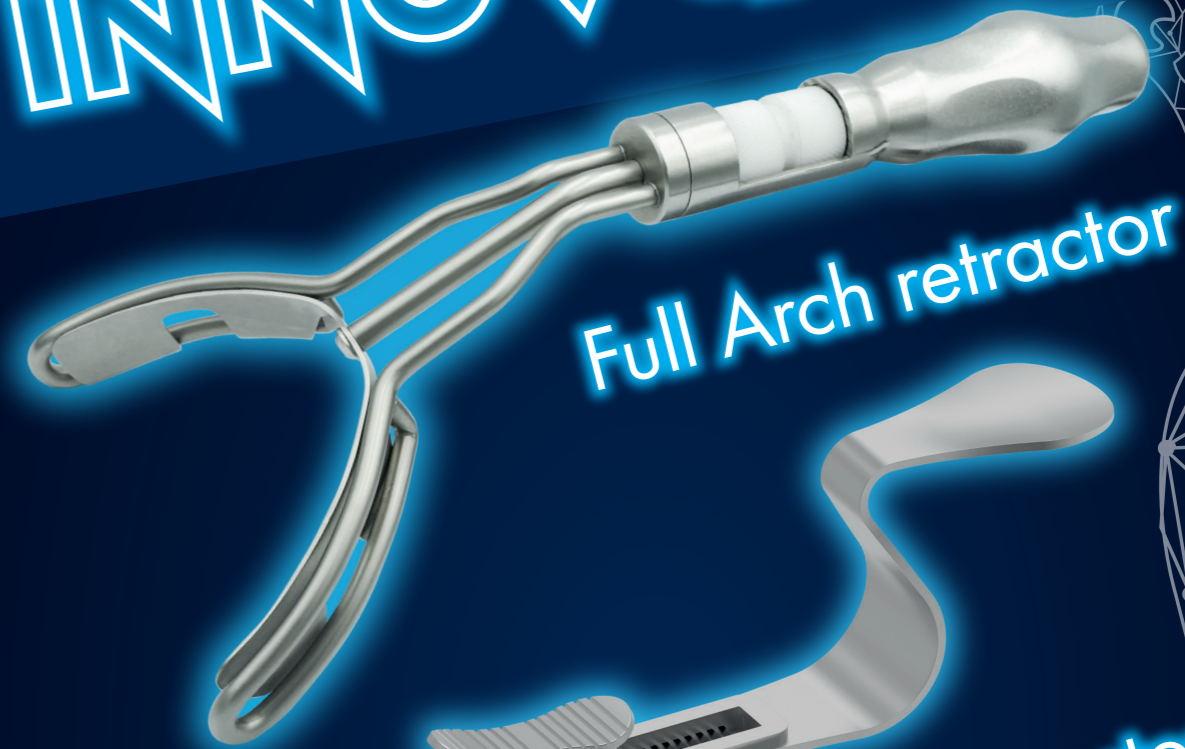
# THE ZYGOMA LOPES RETRACTOR

Art. No.: 637



B-0017-24\_FL Innovations Lopes 2024 EN

# innovations



Full Arch retractor



Double hook retractor



Zygoma retractor

In more complex cases like atrophic maxilla, when the use of Zygomatic implants is needed, a bigger flap is mandatory to improve the visibility in the implant region and to turn the surgery safer. Since I remember the retractors we have been using in this type of surgeries are quite big and heavy requiring strength and power to keep them in position during all the procedure, which can turn the surgery exhausting.

Today, I want to present you a revolutionary instrument, a surgical retractor called the Zygoma Lopes Retractor. This retractor is much smaller and lighter than the previous ones we can find in the market, and it's very ergonomic because it has a specific part in the middle to engage the hand and an active bone tip that is very efficient. One side works as a periosteal (to help raising the flap) and the other side is the active side that grips into the zygomatic bone and keeps the flap away.

The Zygoma Lopes retractor was developed together with high qualified engineers and with the best quality steel in order to fit his functions with the highest comfort both for the clinician and the patient.

Check it out! I am pretty sure this retractor will help you to improve your clinical performance.



invented by  
Dr. Armando Lopes

produced by

**carl martin**  
Solingen  
Finest Dental Instruments

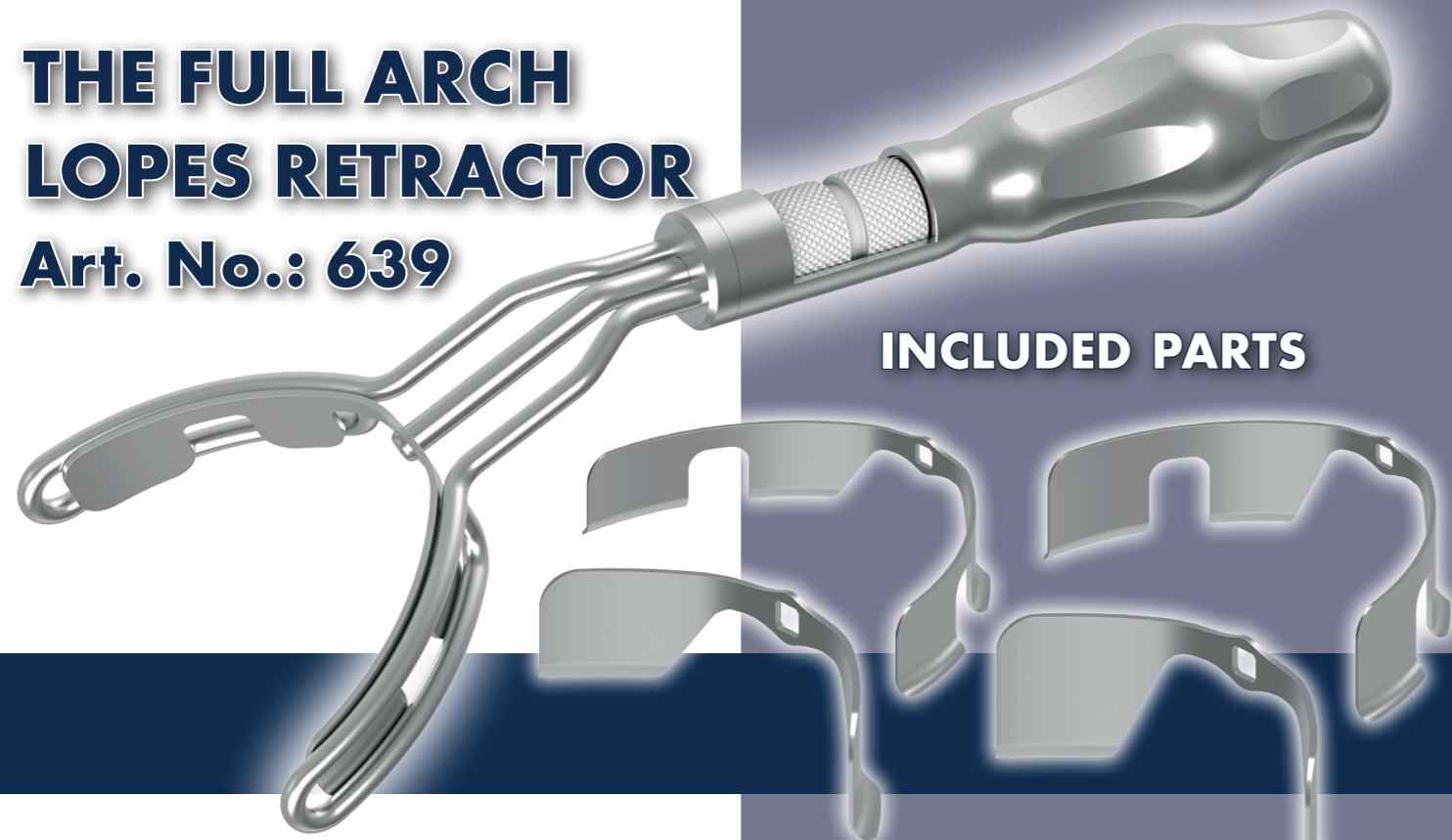
NEUENKAMPER STR. 80 - 86 · D-42657 SOLINGEN · GERMANY

TEL. +49(0)212/81 00 44 · E-MAIL: INFO@CARLMARTIN.DE

INTERNET: WWW.CARLMARTIN.DE

# THE FULL ARCH LOPES RETRACTOR

Art. No.: 639



# THE DOUBLE HOOK LOPES RETRACTOR

Art. No.: 638



Art. No.: 638S  
Slim version

3 function instrument in one hand

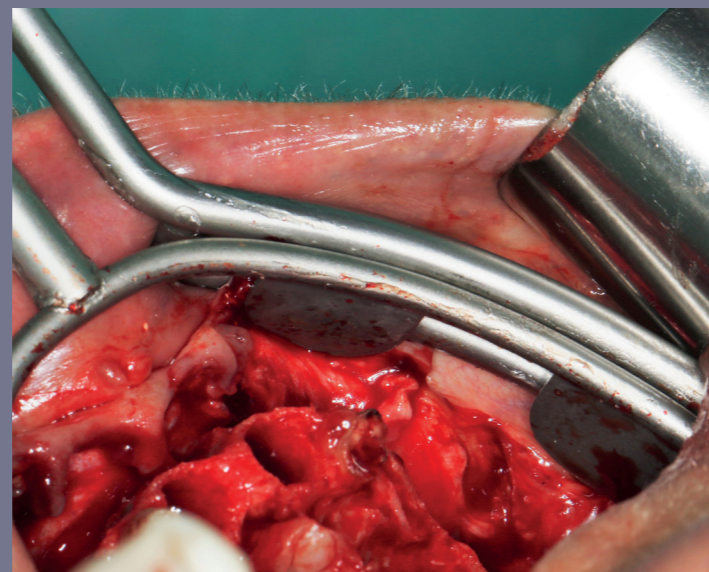
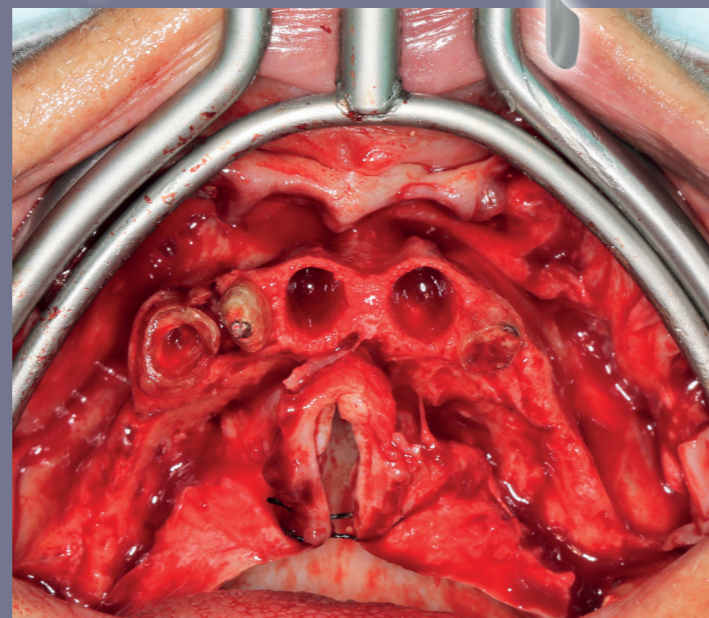
For 20 years now I'm rehabilitating full arch cases with implants in immediate function with the All-on-4 technique. Couple of years ago I identified the need of having a surgical retractor that could give me an extra help not only pushing the lips away but also pushing the flap itself at the same time.

This was the starting point for the development of the Full Arch Lopes retractor, a full arch retractor that has specific flap retractors incorporated in the lip retractor and that very easily helps me (if I want), to have some blades pushing the flap. This allows me to have one more free hand to place my implants during the surgery with a better visibility. On top of this, the opening system is very simple and easy to handle making the flap be out of the field very fast and efficiently.

It's a full arch retractor mostly indicated for total rehabilitation (that fits the lips of both jaws very easily) but can also be used for partial cases.

The Full Arch Lopes retractor is the result of several months of study and development together with a team of engineers resulting in this wonderful instrument that will change and improve your clinical practice.

Don't waste more time! Check it out!



For many years we have been using surgical retractors in Oral and Implant surgery to pull the lips, the cheeks and improve the visibility during our surgeries. However, the flaps we raise everyday are moved (pulled and pushed) with other instruments like periosteals, even lip retractors, decreasing the visibility and requiring extra hands during the surgery.

Today I want to present you a revolutionary instrument, a surgical retractor with 3 functions simultaneously called the Double Hook Lopes Retractor. This retractor has not only the function of pulling the lip with one side and the cheek with the other, but also the flap. With a sliding hook that is controlled by a stable button in the middle it's possible to pull and hold the flap, getting an even better visibility and performance during implant surgeries. It's very easy to hold, manipulate and adjust with just one hand, independently of the specificity or complexity of the case.

It's a universal retractor mostly indicated for single and partial implant surgeries that fits the lips of both jaws very easily (or ergonomically).

The Double Hook Lopes retractor was developed and designed together, with the help of high qualified engineers and with the best quality steel in order to fit his functions with the highest comfort both for the clinician and the patient.

Check it out! I am pretty sure this retractor will help you to improve your clinical performance.